



Grade 3

OLYMPIAD 2023 - 24

SCIENCE

Total Questions: 35

Total Marks: 35

Time: 1hr

Set: A

Question: 1 of 35

QID: 21643

Marks: 1

Select the correct function of the organ given in the picture



- A. to walk
- B. to kick
- C. Both A & B
- D. None of these

Question: 2 of 35

QID: 21635

Marks: 1

Which of these is a nutrient?

- A. Aluminium
- B. Digestion
- C. Fats
- D. Plasma

Question: 3 of 35

QID: 21634

Marks: 1

In complete metamorphosis, an insect:

- A. Hatches into a small version of adult
- B. Hatches out as a caterpillar, which grows into a pupa and becomes an adult.
- C. Is born alive.
- D. All of these

Question: 4 of 35

QID: 21624

Marks: 1

If Sarah is the 5th tallest and John is taller than Sarah but shorter than Emily, who is the 2nd tallest?

- A. Emily
- B. Sarah
- C. John
- D. Not Determinable

Question: 5 of 35

QID: 21639

Marks: 1

The leaves of the plants used as vegetables are

- A. Carrot & Radish
- B. Spinach & Cabbage
- C. Tomatoes & Potatoes
- D. Cauliflower & Ladyfinger

Question: 6 of 35

QID: 21645

Marks: 1

Digestive System: Mouth - X - Y - Small intestine - Large Intestine

Identify X and Y from the following:

- A. Oesophagus, Trachea
- B. Oesophagus, Stomach
- C. Blood Vessels, Stomach
- D. Nasal Cavity, Ureter

Question: 7 of 35

QID: 21658

Marks: 1

During the process of freezing, _____ changes to _____.

- A. Liquid, Solid
- B. Solid, Gas
- C. Gas, Liquid
- D. Solid, Liquid

Question: 8 of 35

QID: 21648

Marks: 1

Which material is commonly used for making windows in houses?

- A. Paper
- B. Glass
- C. Wood
- D. Plastic

You can _____ the object given in the picture



- A. See
 C. Drink

- B. Wear
 D. Both A & B

Which of the following is an incorrect match showing the respiratory structures in animals?

- A. Fish — Gills
 C. Earthworm — Tracheal system

- B. Frog — Lungs
 D. Bird — Gills

Question: 11 of 35

QID: 21629

Marks: 1

Select the animal which does not give birth to a young one.

- A. Monkey
- B. Humans
- C. Lizard
- D. Horse

Question: 12 of 35

QID: 21650

Marks: 1

How can water change into ice?

- A. Water evaporates into ice.
- B. Water melts into ice.
- C. Water freezes into ice
- D. Water condenses into ice.

Question: 13 of 35

QID: 21632

Marks: 1

Vultures are-

- A. Omnivores
- B. Herbivores
- C. Carnivores
- D. Scavengers

Question: 14 of 35

QID: 21633

Marks: 1

Which part does an insect use for smelling ?

- A. Mandibles
- B. Maxillae
- C. Thorax
- D. Antennae

Question: 15 of 35

QID: 21636

Marks: 1

Which amongst the following is used to improve digestive system?

- A. Oily food
- B. Protein rich foods
- C. Roughage
- D. Salt

Question: 16 of 35

QID: 21649

Marks: 1

Which food group does bread belong to?

- A. Dairy
- B. Grains
- C. Protein
- D. Fruits

Question: 17 of 35

QID: 21655

Marks: 1

If two ice cubes are placed in sunlight, one wrapped in white cloth and the other in a transparent plastic cover, which will melt first?

- A. Ice cube wrapped in white cloth
- B. Ice cube in the transparent plastic cover
- C. Both of these will melt together
- D. None of them will melt

Question: 18 of 35

QID: 21638

Marks: 1

Preeta is fond of pickles. Her mother brought Carrot, Radish, Turnip and Chillies for preparing pickles. She has to store the pickle for a long time, so what she will add for the preservation of the pickle?

- A. Water
- B. Salt
- C. Chemicals
- D. All of them

Question: 19 of 35

QID: 21640

Marks: 1

A long tube that carries food from The mouth-to-stomach is:

- A. Urethra
- B. Trachea
- C. Oesophagus or food pipe
- D. Ureters

Question: 20 of 35

QID: 21637

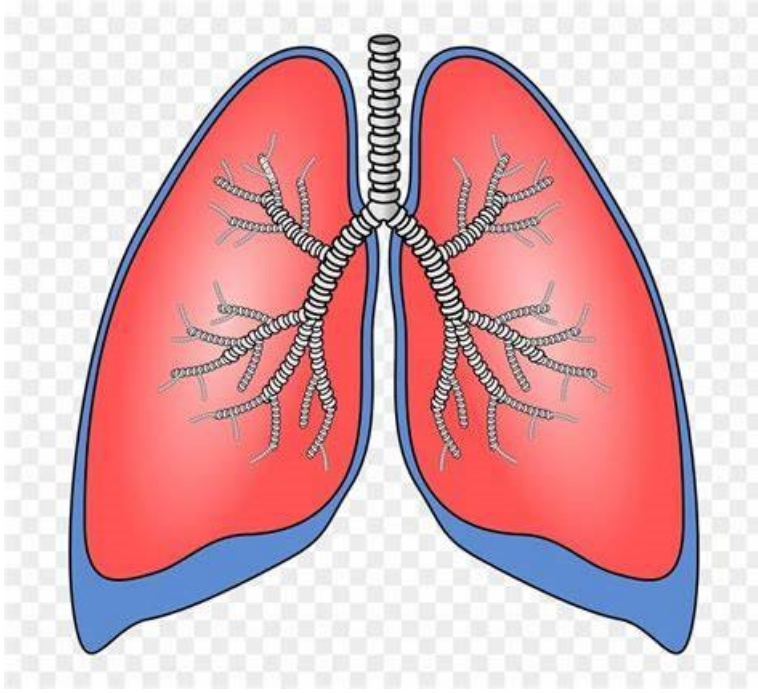
Marks: 1

Choose the correct option.

Cake: Bake:: Rice:

- A. Steam
- B. Wash
- C. Roast
- D. Fry

Select the correct function of the organ given in the picture



- A. to breathe
- B. to touch
- C. to pump blood
- D. to chew

Arrange the following animals based on their weight from lightest to heaviest: Elephant, Dog, Rabbit, Horse

- A. 2,3,1,4
- B. 3,4,2,1
- C. 1,4,3,2
- D. 3,2,4,1

Select the animal that does not have a backbone.

- A. Great Blue Heron
- B. Ladybug



Select the INCORRECT statement.

- (a) The skull is a movable bone, that protects the brain.
- (b) Our body needs oxygen for survival.
- (c) The heart pumps blood into tubes called nerves.
- (d) Kidneys are associated with the Digestive system.

- A. A & B
- B. A, C & D
- C. B, C & D
- D. All of them are incorrect

How many days are in a week?

- A. 2
- B. 5
- C. 3
- D. 7

Which system is illustrated in the given flow chart?

Nose → Trachea (Windpipe) → Lungs

- A. Circulatory system
- B. Respiratory system
- C. Nervous system
- D. Muscular system

- A. A & D
- B. ONLY A
- C. ONLY B
- D. ONLY C

Scramble the unscrambled words to find a Solid state of matter.

- A. KILM
- B. ABLTE
- C. RIA
- D. All of these

Question: 28 of 35

QID: 21653

Marks: 1

What do birds use for building their nests?

- A. Mud
- B. Twigs and leaves
- C. Sand
- D. Rocks

Question: 29 of 35

QID: 21631

Marks: 1

Choose the correct option:

- (i) Birds have hollow bones which help them to fly.
- (ii) Ostrich is a flightless bird.
- (iii) The Vulture is a herbivorous bird.
- (iv) Ducks have pointed beaks.

T - True

F - False

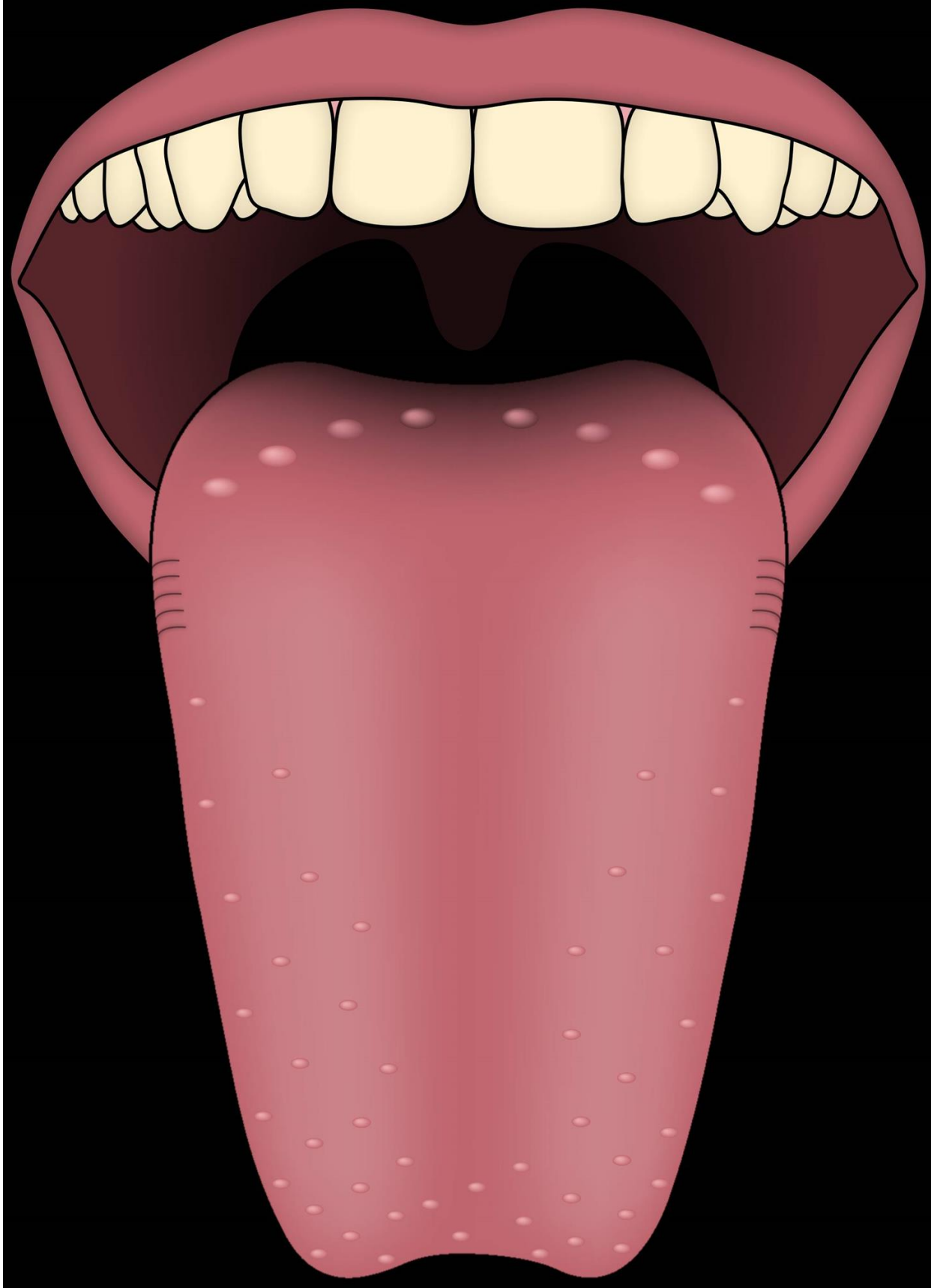
- A. TFTF
- B. FTFT
- C. TTFF
- D. FFTT

Question: 30 of 35

QID: 21644

Marks: 1

Select the correct function of the organ given in the picture



- A. to smell
- C. to see

- B. to touch
- D. to taste

Question: 31 of 35

QID: 21627

Marks: 1

If today is the 20th of October, what will be the date two days before tomorrow?

- A. 19th October
- B. 21st October
- C. 18th October
- D. 22nd October

Question: 32 of 35

QID: 21656

Marks: 1

Milk is a body-building food. It is rich in _____. Fruits are energy-giving foods as they are rich in _____.

- A. Protein, Carbohydrates
- B. Carbohydrates, Vitamins
- C. Protein, Sugars
- D. None of these

Question: 33 of 35

QID: 21630

Marks: 1

What is found inside a fruit?

- A. Leaf
- B. Seed
- C. Stem
- D. Plant

Question: 34 of 35

QID: 21647

Marks: 1

Newspaper is a means of—

- A. Audio communication
- B. Audio-visual communication
- C. Tele communication
- D. Mass Communication

Question: 35 of 35

QID: 21657

Marks: 1

Which of the following organ is completely protected by the ribcage?

- A. Small Intestine
- B. Lungs
- C. Brain
- D. Large Intestine

-- END OF QUESTION PAPER --